



ALPHA

IP 65 Panel PC – Robust Aluminum Housing
– Membrane keyboard / Touchscreen / IPC479 –

Mechanical Dimensions
Supplement to leaflet

Issue 1.00

12.3.2009

MSC Tuttlingen GmbH

Rudolf-Diesel-Straße 17
D-78532 Tuttlingen

Tel. +49 7461 925 200

Fax +49 7461 925 268

E-Mail sales@msc-tuttlingen.de

www.msc-tuttlingen.com



Contents

1	Front	3
1.1	ALPHA with membrane keyboard (and touchscreen)	3
1.2	ALPHA with touchscreen	3
2	Device dimensions.....	4
	ALPHA-K/x-xxx/15,0/.. · ALPHA-KT/x-xxx/15,0/.. · ALPHA-T/x-xxx/15,0/..	4
3	Flange connection	6
3.1	Dimensioning	6
3.2	Sealing	7
4	Nomenclature	8

Table of Figures

Fig. 1-1:	ALPHA-K(T)/x-xxx/15,0/.. – Front	3
Fig. 1-2:	ALPHA-T/x-xxx/15,0/.. – Front	3
Fig. 2-1:	Device dimensions	5
Fig. 3-1:	Flange connection – Dimensioning	6
Fig. 3-2:	Flange connection – Sealing	7
Fig. 4-1:	Example for type identification	8

1 Front

1.1 ALPHA with membrane keyboard (and touchscreen)

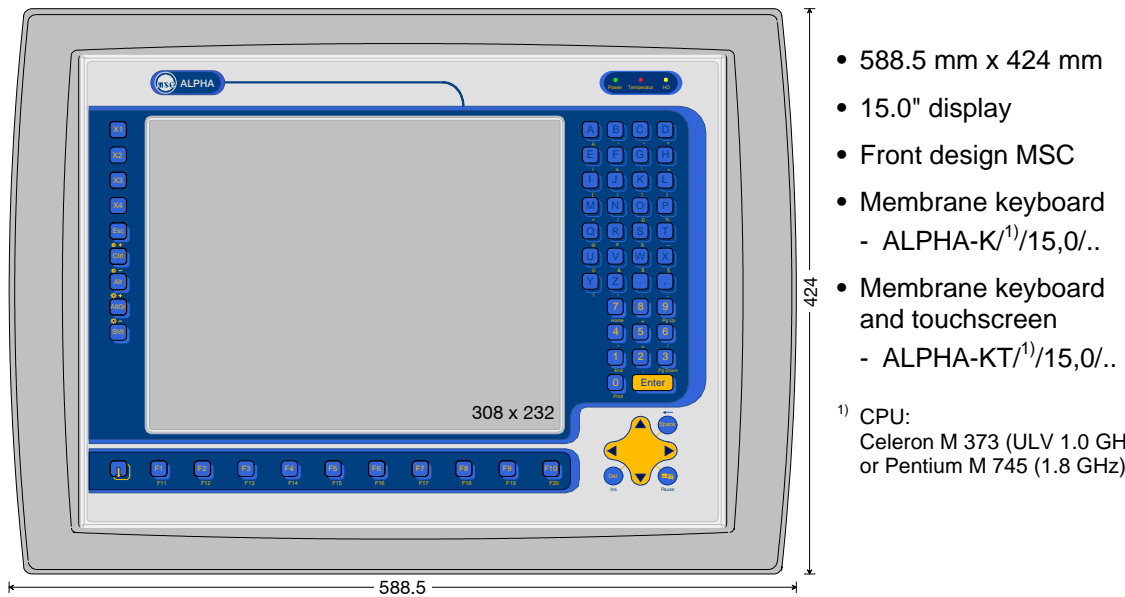


Fig. 1-1: ALPHA-K(T)/x-xxx/15,0/.. – Front

1.2 ALPHA with touchscreen

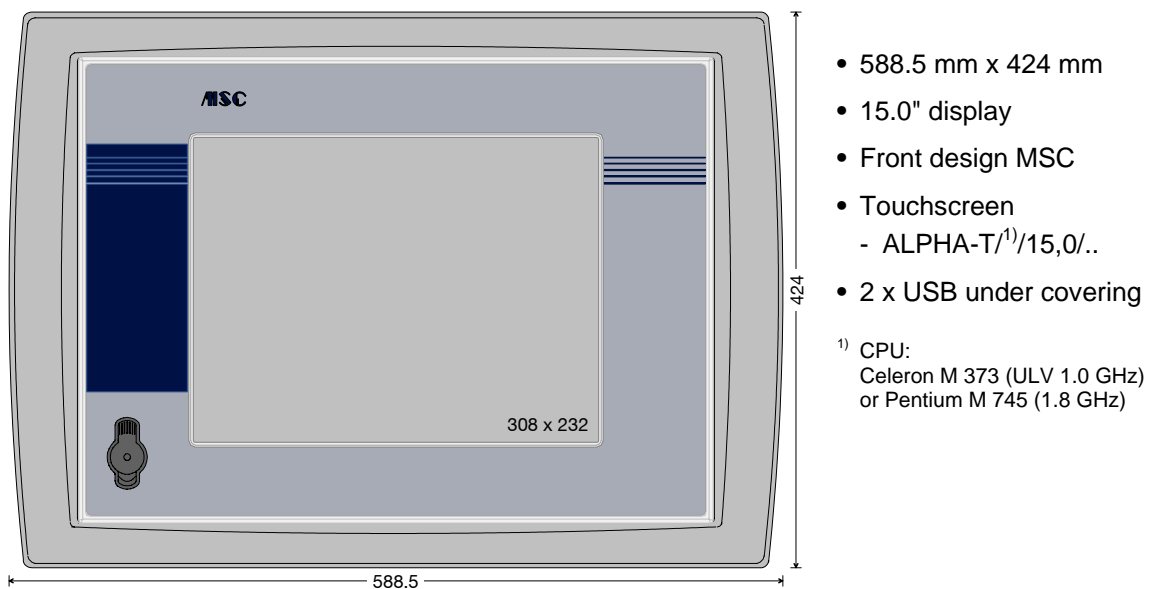
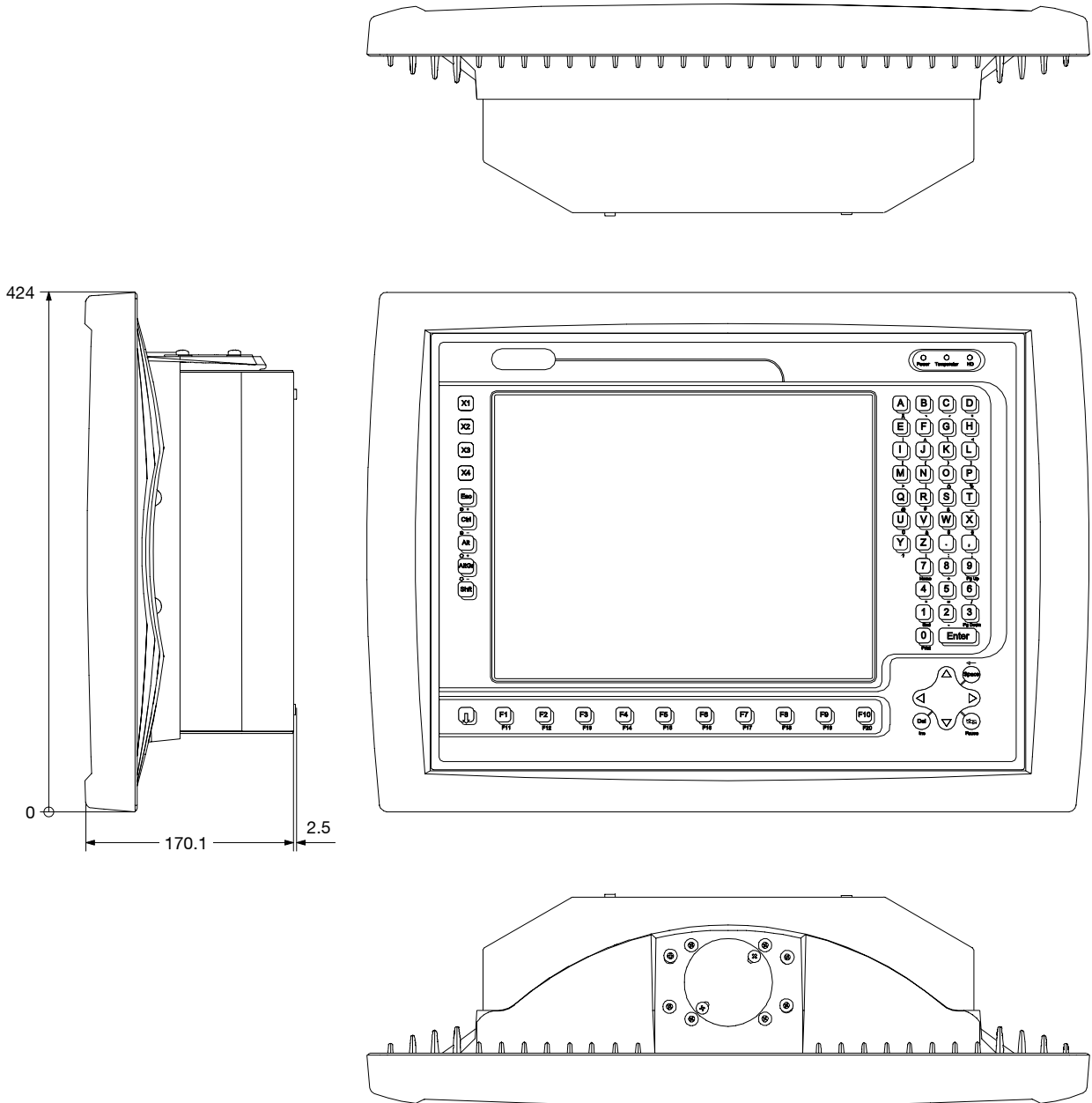
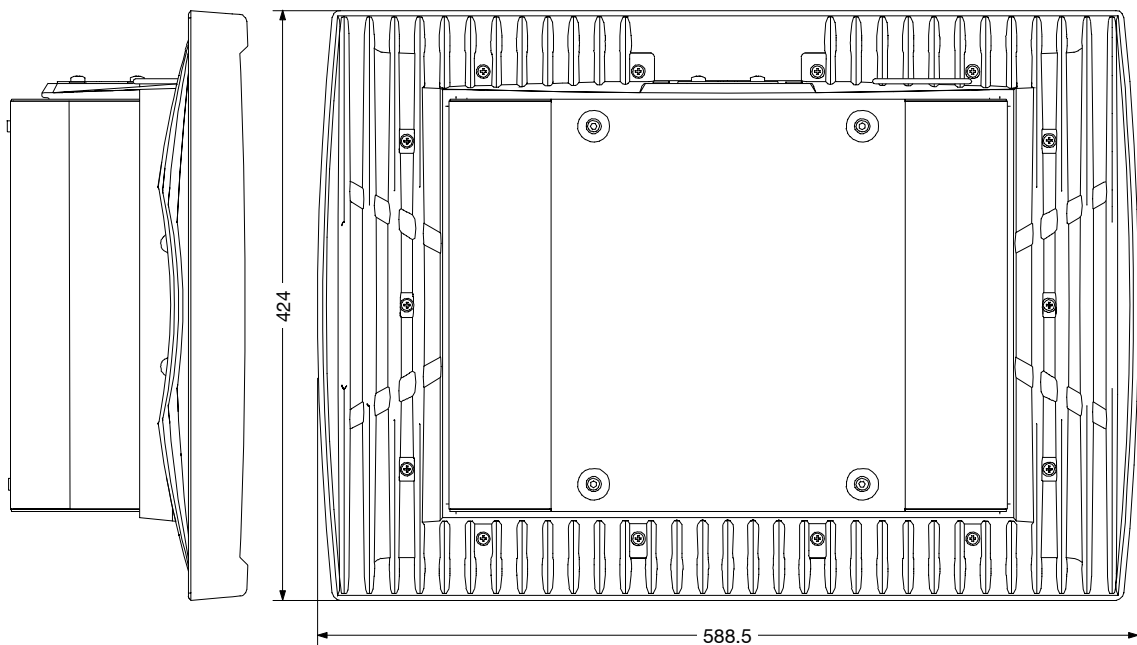


Fig. 1-2: ALPHA-T/x-xxx/15,0/.. – Front

2 Device dimensions

ALPHA-K/x-xxx/15,0/.. · ALPHA-KT/x-xxx/15,0/.. · ALPHA-T/x-xxx/15,0/..





General tolerances
ISO 2768 – mK

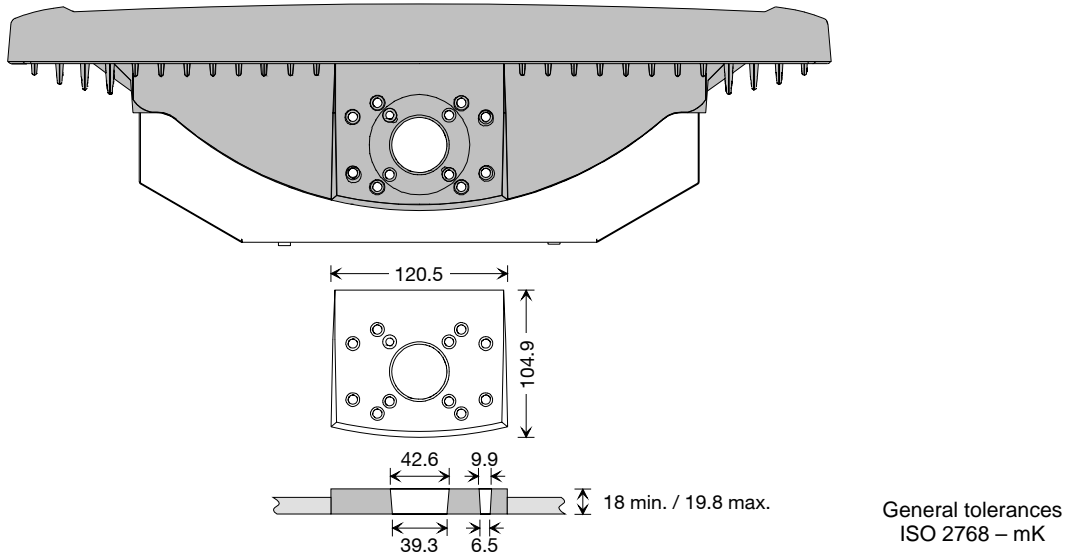
Fig. 2-1: Device dimensions

Note: The mechanical dimensions of the ALPHA-K, ALPHA-KT and ALPHA-T devices are identical.
The figure shows ALPHA-K(T)/x-xxx/15,0/.../o, i.e. with flange connection top-mounted, and closed holes in the flange connection as on delivery according to UL 508.

3 Flange connection

3.1 Dimensioning

Example: ALPHA with flange connection top-mounted and without coverings
 The following is valid correspondingly for other device versions.



Dimensions of the holes for possible support arm systems:

- ROSE GT48/2
- Bernstein CS-2000 SL 45/60
- Rittal CP-L 120 x 65 mm

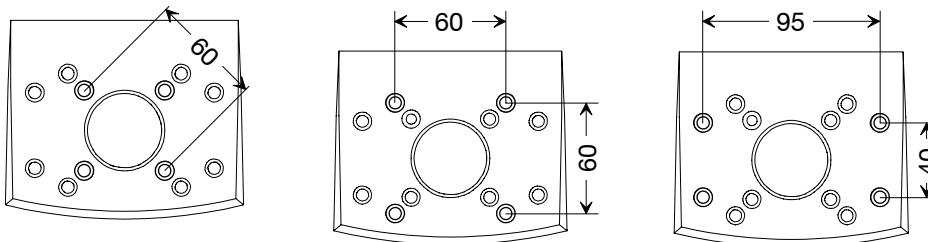


Fig. 3-1: Flange connection – Dimensioning

3.2 Sealing

Beispiel: ALPHA mit Flanschanschluss oben und mit Abdeckungen
Folgendes gilt für andere Geräteversionen entsprechend.

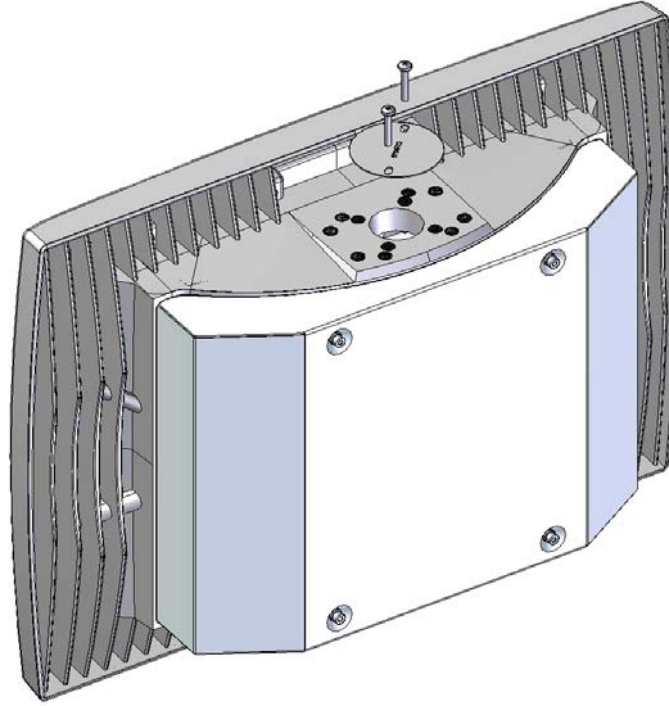


Fig. 3-2: Flange connection – Sealing

Following coverings are used at the flange connection:

- Cover sheet
 - Raised head screw M5x30 (2x)
 - Washer M5 (2x)
 - Nut M5 (2x)
- Counter sunk screw M4x12 (8x)
 - Blind rivet nut (8x)



Notice:

The holes in the flange connection are closed on delivery in accordance with UL 508 according to the above figure.

Only at the holes needed for fastening the coverings have to be removed.

4 Nomenclature

The identification of the different versions of ALPHA type series depends on

- manner of operating panel,
- CPU,
- display size,
- hard disk,
- memory,
- operating system,
- options
 - drive unit,
 - additional interfaces,
 - flange mount.

For example:

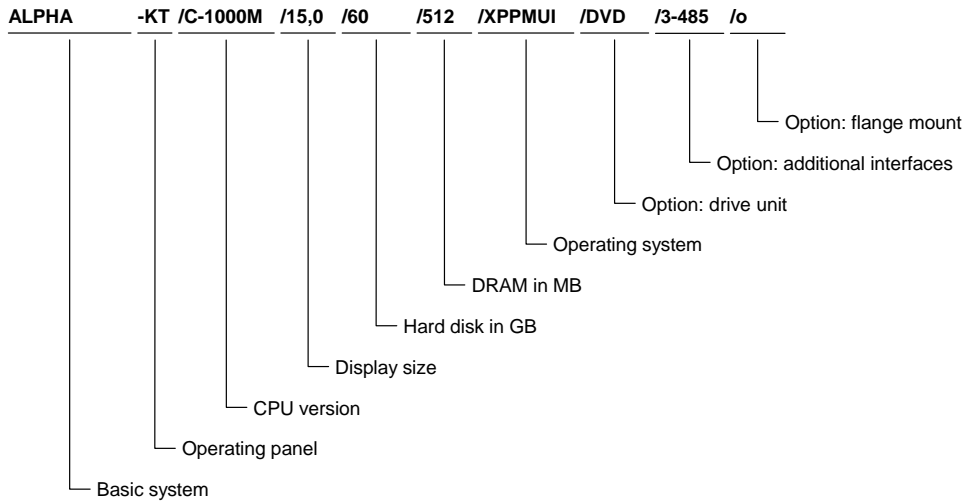


Fig. 4-1: Example for type identification